

SETUP PROCEDURES

Windows XP/Vista/7

Things to check when starting.....	2
The network cable	2
Connect the computer to the network	2
The basic setup of your computer.....	3
How to check DHCP settings.....	3
How to check the network connection	5
Windows XP setup procedure.....	7
Windows Vista setup procedure.....	9
Disconnecting CampusNet (Windows Vista).....	11
Connecting CampusNet (Windows Vista).....	11
Windows 7 setup procedure.....	12
Disconnecting CampusNet (Windows 7).....	14
Connecting CampusNet (Windows 7).....	14
Most common fault situations when logging in to CampusNet.....	15
Windows XP.....	15
Windows Vista	16
Windows 7	17
CampusNet support	18
Useful information	19
Connection to Oulu University.....	19
Auxiliary equipments in the network	19
Before operating.....	19
CampusNet documents.....	20

Things to check when starting

The network cable

The network cable is not usually included in the hardware of a new computer or a network card. Therefore you need to buy it separately. The adapter of the network cable (in both ends) should be of type RJ45. When buying the network cable you can for example ask for a straight-through network cable for Ethernet-network with RJ45/RJ45 adapters.

“Visual” inspection of the network cable

Check that the type of the adapter is RJ45 (picture below) and that it has 8 pins (the telephone cable has 6 pins). Usually all pins are connected. At least pins 1, 2, 3 and 6 have to be connected.

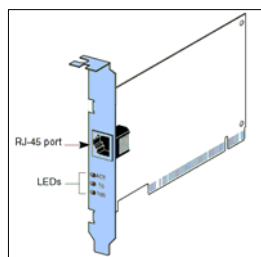


Picture 1

RJ45-adapter

Connect the computer to the network

When you buy a new computer the network card is usually included in the hardware. For older computers you need to buy the network card. When buying the network card you should mention that the card would be used in an Ethernet-network with a RJ45 connection. The speed of the network card is 10/100/1000 Mb/s. When installing the network card you should follow the directions of the manufacturer.



An example of a network card



An example of a computer wall socket

Picture 2

Attach your computer to the network wall socket with the network cable and start your computer. Check that the leds of your network card are lit. The link-led is lit the whole time and the Data-led is flashing. In older models there are no leds. In Virkakatu 3 (ADSL) and Toivoniementie 1 (HomePNA) the Internet interface is different from the above. You can get more information from PSOAS.

The basic setup of your computer

In the CampusNet network there are two kinds of servers, a DHCP server and a web server (<http://10.132.0.2>). The DHCP server distributes IP addresses for CampusNet intranet. These IP addresses are for local traffic only (not for Internet-traffic). On the CampusNet web server you can find the program you need for Internet traffic for Windows 95/98/ME/NT/2000 operating systems. To computers with Windows XP and Windows Vista operating system you do not need to install this program. The DHCP settings should though be checked to avoid problems.

To connect to the web server the DHCP settings have to be enabled.

The setup procedures for Mac users is available at http://10.132.0.2/CampusNet/Setup_procedures/Mac_Setup_procedures_CN.pdf
Unfortunately PSOAS does not offer any support for Unix/Linux operating systems.

How to check DHCP settings

Following screenshots are from Windows XP. Other Windows versions are explained under the screenshots.



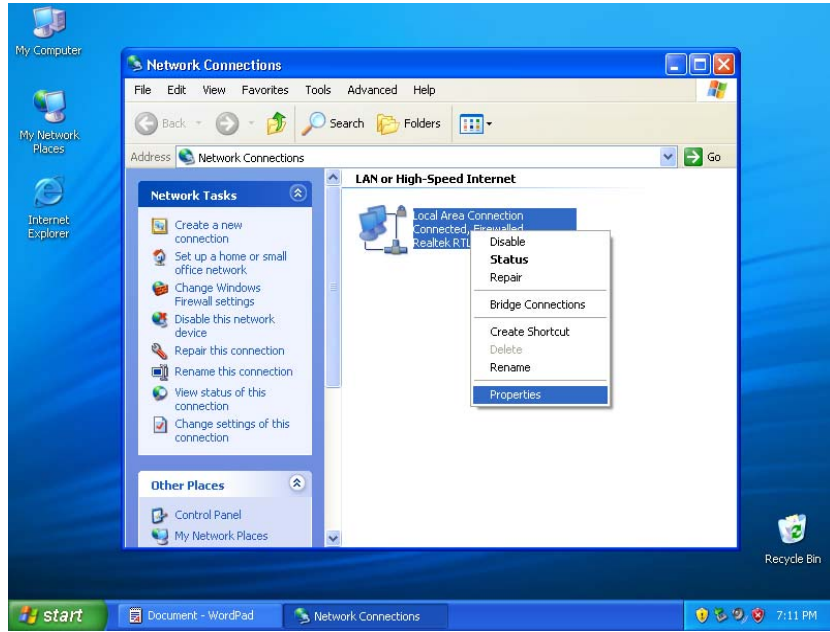
Picture 3

Windows XP
Start → All programs → Accessories → Communications → Network Connections.

Windows Vista
Start → Network → Network and Sharing Center → Chose Task from the menu Manage Network Connections

Windows 7
Start → Control Panel → Network and Internet → Network and Sharing Center → Change adapter settings

Windows XP



Picture 4

Windows XP

Chose **Local Area Connection** → Click with the right mouse button **Properties**

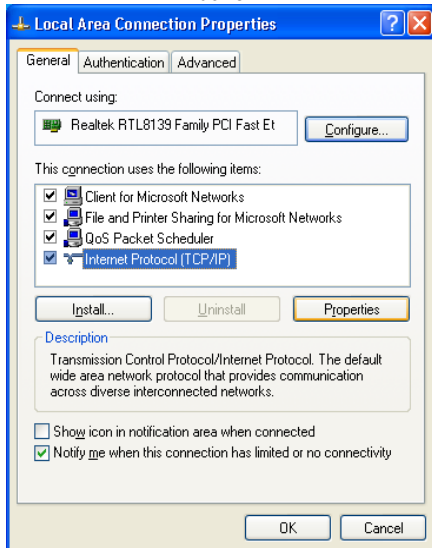
Windows Vista

Chose **Local Area Connection** → Click with the right mouse button **Properties**

Windows 7

Chose **Local Area Connection** → Click with the right mouse button **Properties**

Windows XP



Picture 5

Windows XP

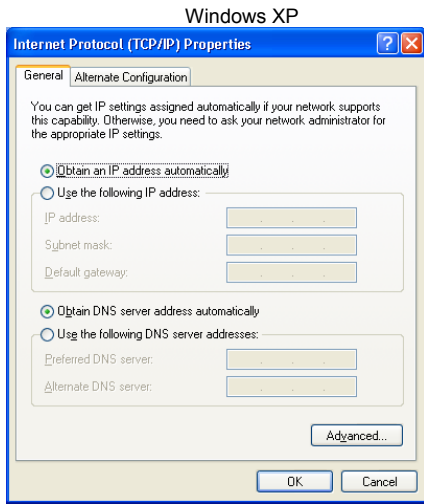
Chose **Internet Protocol (TCP/IP)** and **Properties**

Windows Vista

Chose **Internet Protocol Version 4 (TCP/IPv4)** and **Properties**

Windows 7

Chose **Internet Protocol Version 4 (TCP/IPv4)** and **Properties**



Picture 6

Windows XP
Chose settings above and click **OK → OK**

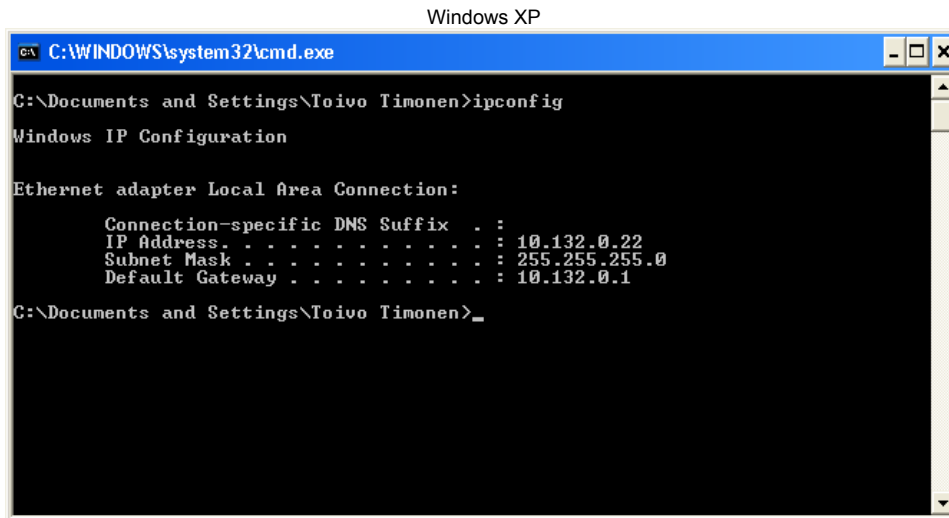
Windows Vista
Chose settings above and click **OK → OK**

Windows 7
Chose settings above and click **OK → OK**

How to check the network connection

Before installing CampusNet please, check that the local area connection of your computer is working and that you can operate in the Campus network. You can find more information of CampusNet-network from the document "General_about_CampusNet_network".

You can for example check the IP-address the CampusNet-network has given your computer. Below in picture 7 there is an instruction how to do this. If the form of the IP-address is 10.1xx.xxx.xxx the IP-address is correct and you can continue the setup (page 7 WinXP, page 9 Win Vista and page 12 Win 7). If the form of the IP-address is something else for example 164.xxx.xxx.xxx you should not continue the setup before the problem is solved.



Picture 7

Windows XP
Start → Run Write cmd → OK
Write DOS-command **ipconfig** Press **Enter**

Windows Vista
Start → All Programs → Accessories → Chose Command Prompt
Write DOS-command **ipconfig** Press **Enter**

Windows 7
Start → All Programs → Accessories → Chose Command Prompt
Write DOS-command **ipconfig** Press **Enter**

If there are problems with the connection please, check the local area connections

Windows XP/Vista/7 users can now check if the local area connection not works (the network cable is connected). Here are the most common statuses of the Local Area Connection (Picture Win XP).

Windows XP

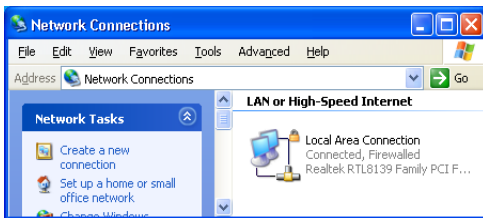
Start → All programs → Accessories → Communications → Network Connections.

Windows Vista

Start → Network → Network and Sharing Center → Chose Task from the menu **Manage Network Connections**

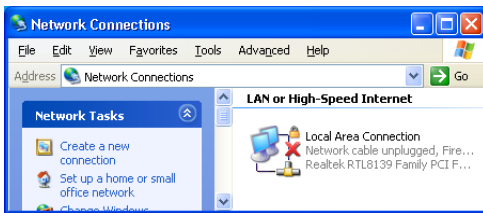
Windows 7

Start → Control Panel → Network and Internet → Network and Sharing Center → Change adapter settings



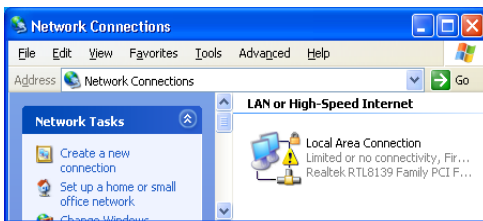
Picture A

The local area Connection is connected (blue shortcut). Windows Vista and Windows 7 "Unidentified network". Continue the setup from page 7.



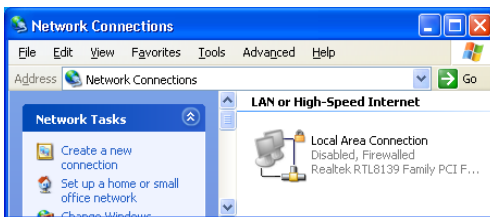
Picture B

No connection. Check your network cable (page 2). Check if the cable is unplugged. If there is still no connection contact CampusNet technical support (page 18)



Picture C

Windows XP. "Limited connectivity". DHCP-server no answer. Check the network cable (page 2). If this does not help contact CampusNet technical support (page 18).



Picture D

The local area connection is disabled (the shortcut is grey). Click the right button on your mouse and choose Enable.

If you have Windows Vista move to page 9

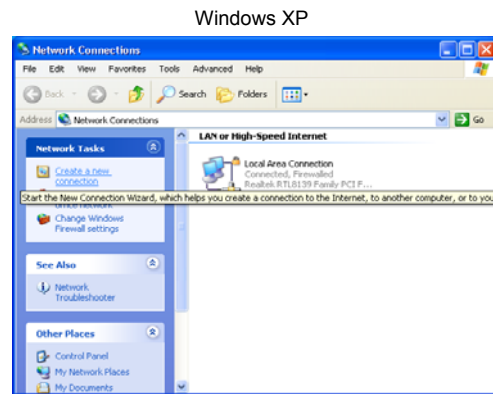
If you have Windows 7 move to page 12

Windows 95/98/ME/NT/2000 guide can be found on the the www-server address: http://10.132.0.2/CampusNet/Setup_procedures/

Windows XP setup procedure



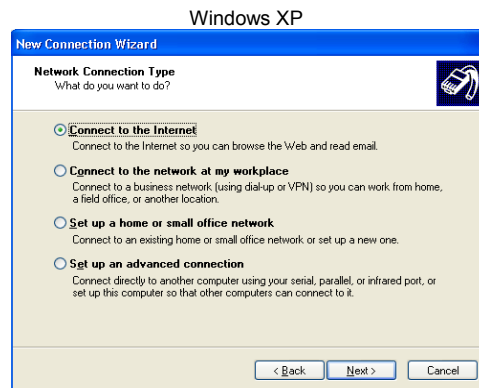
1. Windows XP setup procedure
Start → All programs → Accessories → Communications → Network Connections.



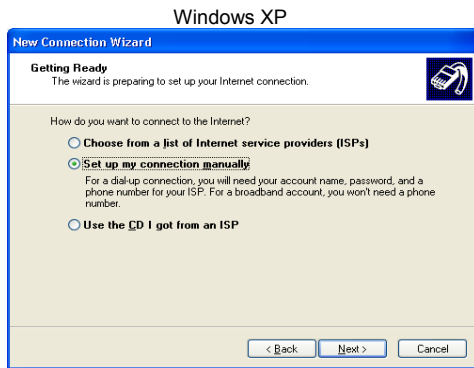
2. Window XP setup procedure
Chose **Network Tasks** from the menu and **Create a new Connection**.



3. Windows XP setup procedure
Chose **Next**

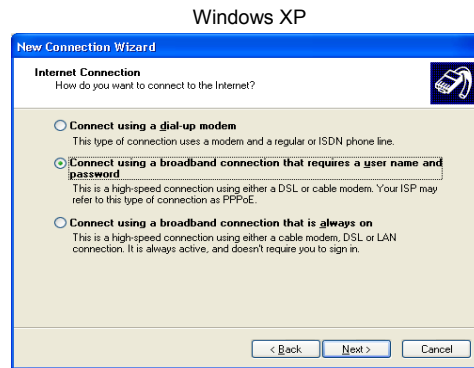


4. Windows XP setup procedure
Chose **Connect to the Internet** and **Next**



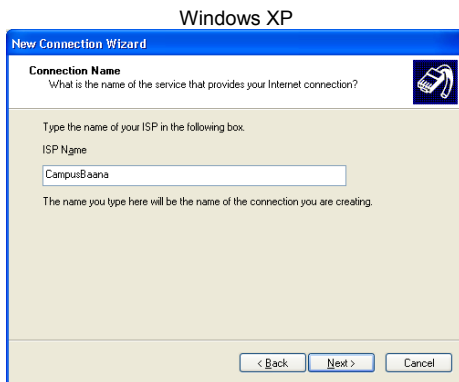
Picture 12

5. Windows XP setup procedure
 Chose **Setup my connection manually** and **Next**



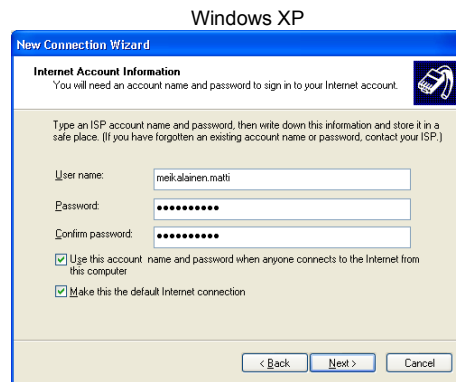
Picture 13

6. Windows XP setup procedure
 Chose **Connect using a broadband connection that requires a user name and password** and **Next**



Picture 14

7. Windows XP setup procedure
 Write the name of the operator for example **CampusNet** and **Next**



Picture 15

8. Windows XP setup procedure
 Write the **User name** and **Password** you have got from PSOAS and **Next**



Picture 16

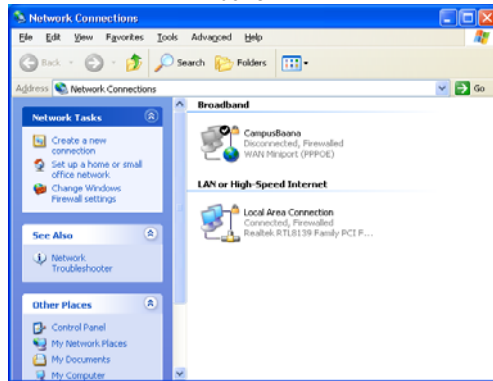
9. Windows XP setup procedure
 You can create the CampusNet shortcut on your desktop. To finish the process click **Finish**



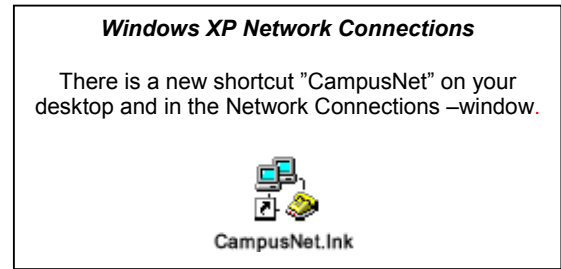
Picture 17

10. Windows XP Network Connections
 If you want to save your password choose "Save this user name for the following users" (not recommended). Connect to the Internet by choosing **Connect**.

Windows XP



Picture 18



Windows Vista setup procedure

The setup procedure may differ from these instructions due to the configuration of your computer.

Windows Vista

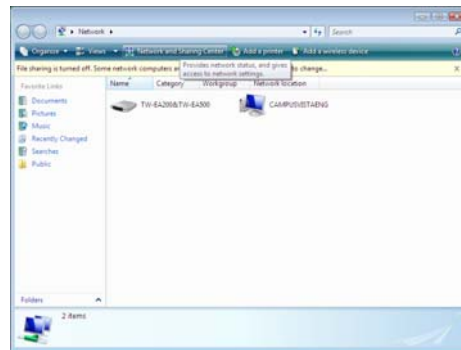


Picture 19

1. Windows Vista setup procedure

Start → Network.

Windows Vista



Picture 20

2. Windows Vista setup procedure

Chose **Network and Sharing Center**

Windows Vista

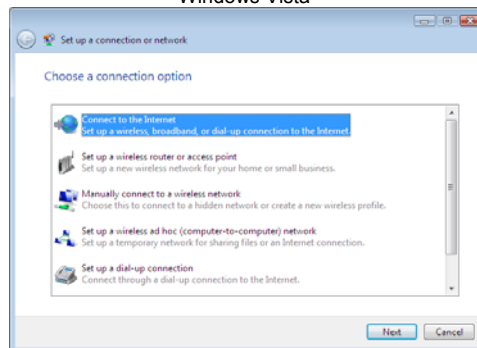


Picture 21

3. Windows Vista setup procedure

Chose **Tasks** from the menu and **Set up Connection or network**

Windows Vista

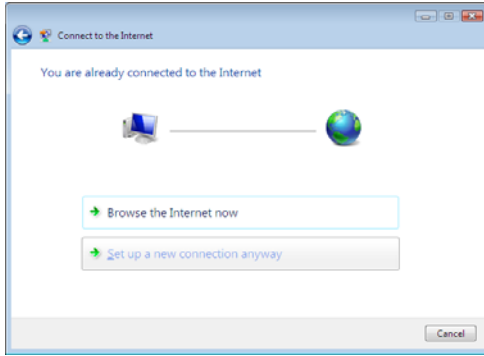


Picture 22

4. Windows Vista setup procedure

Chose **Connect to the Internet** and **Next**

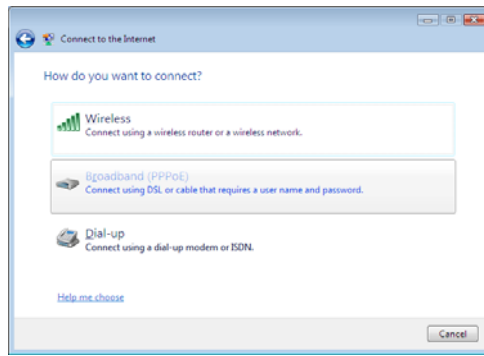
Windows Vista



Picture 23

5. Windows Vista setup procedure
Chose **Set up a new connection anyway**

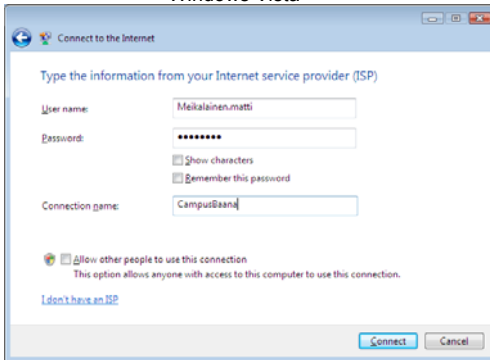
Windows Vista



Picture 24

6. Windows Vista setup procedure
Chose **Broadband (PPPoE)**.

Windows Vista



Picture 25

7. Windows Vista setup procedure
Write the **User name** and **Password** you have got from PSOAS and **Connection name** of the operator for example **CampusNet**.
Chose **Connect**

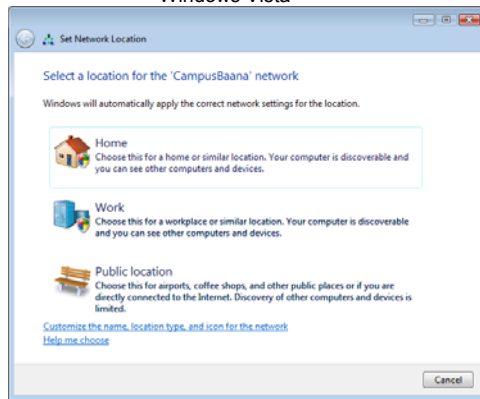
Windows Vista



Picture 26

8. Windows Vista setup procedure
You are connected to the Internet
Chose **Close**

Windows Vista

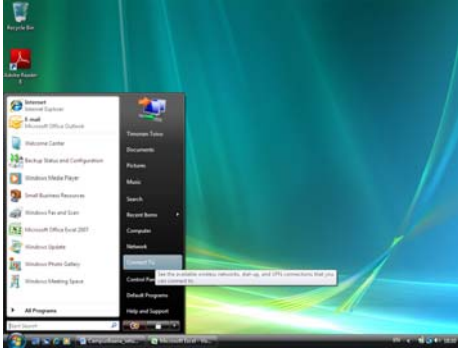


Picture 27

9. Windows Vista setup procedure
Chose **Home** and in the next window
Continue
You can open your web browser

Disconnecting CampusNet (Windows Vista)

Windows Vista

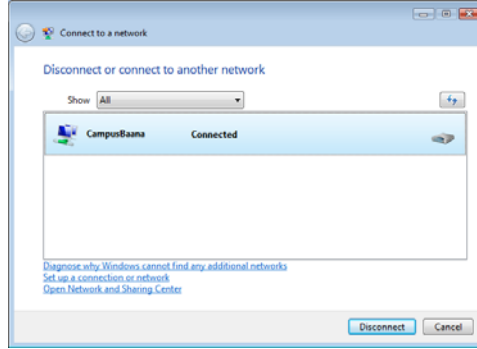


Picture 28

1. Windows Vista disconnecting

Start → Connect to.

Windows Vista



Picture 29

2. Windows Vista disconnecting

Stop the CampusNet connection by clicking **Disconnect** and in the next window Chose **Close**

Connecting CampusNet (Windows Vista)

Windows Vista

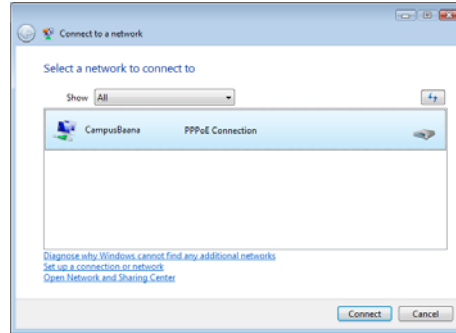


Picture 30

1. Windows Vista connecting

Start → Connect to.

Windows Vista

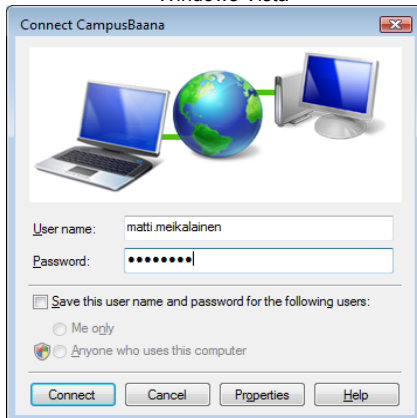


Picture 31

2. Windows Vista connecting

Chose **CampusNet** and **Connect**

Windows Vista



Picture 32

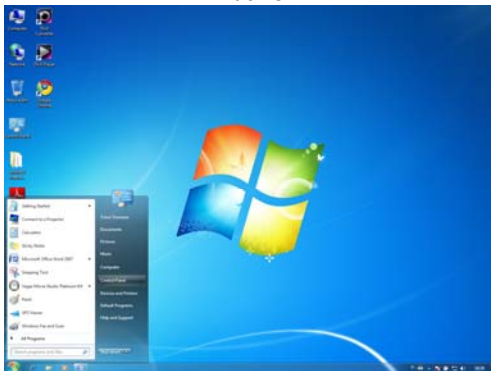
3. Windows Vista connecting

Write **User name** and **Password**.
If you want to save your password choose "Save this user name and password for the following users" (not recommended).
Connect to the Internet by choosing **Connect**.

Windows 7 setup procedure

The setup procedure may differ from these instructions due to the configuration of your computer.

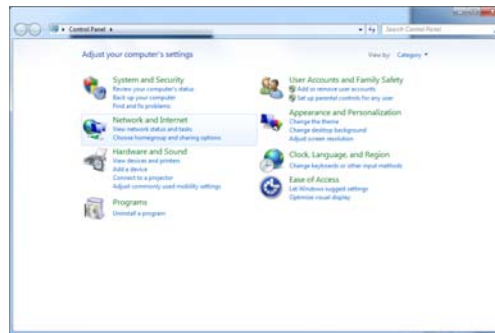
Windows 7



Picture 33

1. Windows 7 setup procedure
Start → Control Panel.

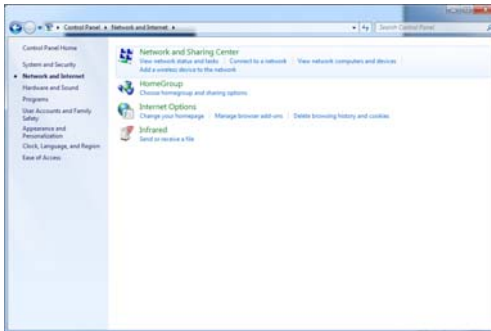
Windows 7



Picture 34

2. Windows 7 setup procedure
Chose **Network and Internet**

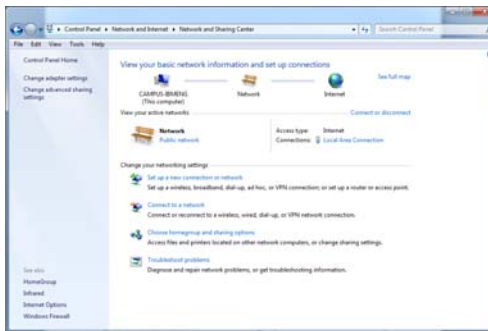
Windows 7



Picture 35

3. Windows 7 setup procedure
Chose **Network and Sharing Center**.

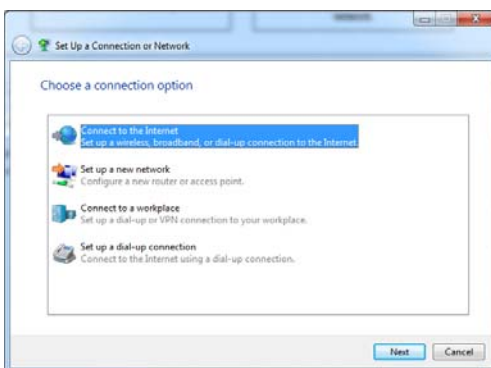
Windows 7



Picture 36

4. Windows 7 setup procedure
Chose **Set up a new connection or network**.

Windows 7



Picture 37

5. Windows 7 setup procedure
Chose **Connect to the Internet**.

Windows 7



Picture 38

7. Windows 7 setup procedure
Chose **Set up a new connection anyway**.



Picture 39

7. Windows 7 setup procedure
Chose **Broadband (PPPoE)**.



Picture 40

8. Windows 7 setup procedure
Write the **User name** and **Password** you have got from PSOAS and **Connection name** of the operator for example **CampusNet**.



Picture 41

9. Windows 7 setup procedure
You are connected to the Internet
Chose **Close**



Picture 42

10. Windows 7 setup procedure
In Network and Sharing Center –window there is a new connection CampusNet



Picture 43

11. Windows 7 setup procedure
Set Network Location -window
choose for example Public network
You can open your web browser

Disconnecting CampusNet (Windows 7)

Windows 7



Picture 44

1. Windows 7 disconnecting

Choose from Taskbar "**Currently connected to**" the connection to be disconnected for example CampusNet and choose **Disconnect**.

Connecting CampusNet (Windows 7)

Windows 7

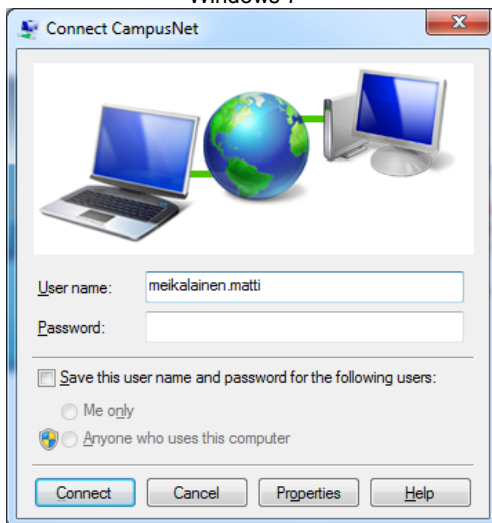


Picture 45

2. Windows 7 connecting

Choose from Taskbar "**Currently connected to**" and choose the connection to be opened for example CampusNet ja valitse **Connect**.

Windows 7



Picture 46

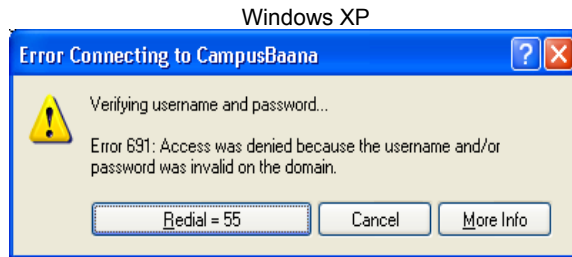
2. Windows 7 connecting

Write **User name** and **Password**.
If you want to save your password choose "Save this user name and password for the following users" (not recommended).
Connect to the Internet by choosing **Connect**.

Most common fault situations when logging in to CampusNet

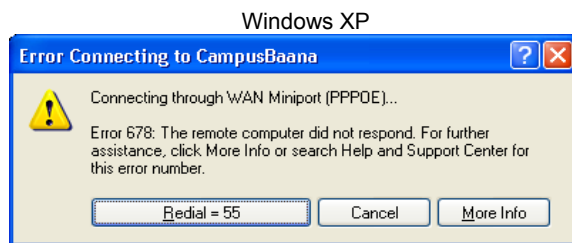
Here is shown the most common fault situations in Windows when trying to log in by starting the CampusNet connection. Below you can find the most common fault reports.

Windows XP



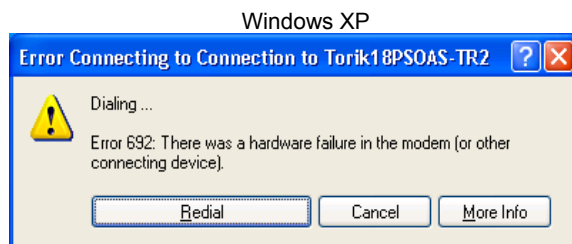
Error 691

Your computer and network connection is ok. Rewrite your user name and password. If there is still no connection please check your user name and password from PSOAS accommodation office (tel. +358 8 3173 110).



Error 678

There is probably no traffic between the computer and the network. Do checkings described on page 5 and 6 (picture C).



Error 692

No connection to the network. Check the Local Area Connection (page 6 and picture B).

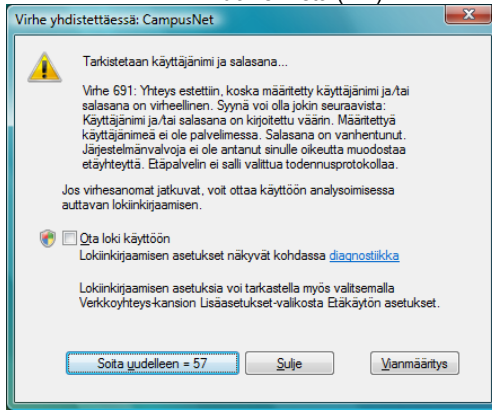


Error 633

The local area connection is disabled. Check the Local Area Connection (page 6 and picture D).

Windows Vista

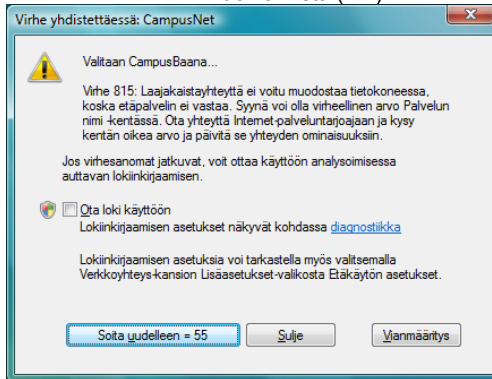
Windows Vista (Fin)



Error 691

Your computer and network connection is ok. Rewrite your user name and password. If there is still no connection please check your user name and password from PSOAS accommodation office (tel. (08) 3173 110).

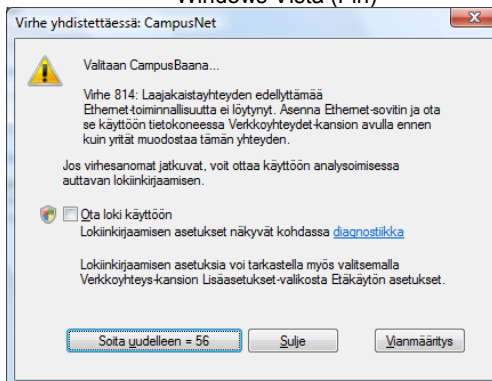
Windows Vista (Fin)



Error 815

There is probably no traffic between the computer and the network or no connection to the network. Check the Local Area Connection (page 5 and 6 (picture B and D)).

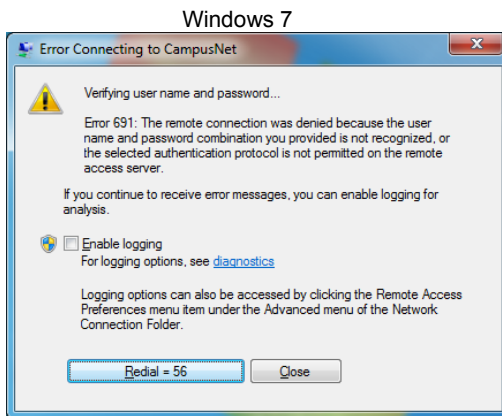
Windows Vista (Fin)



Error 814

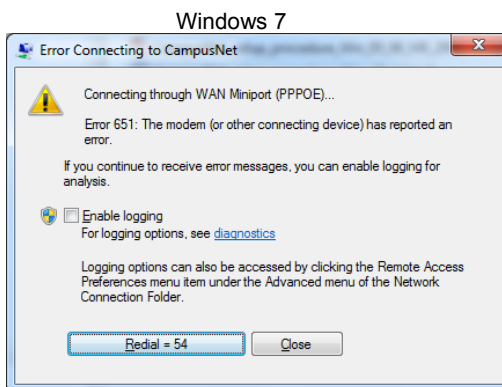
The local area connection is disabled. Check the Local Area Connection (page 6 and picture D).

Windows 7



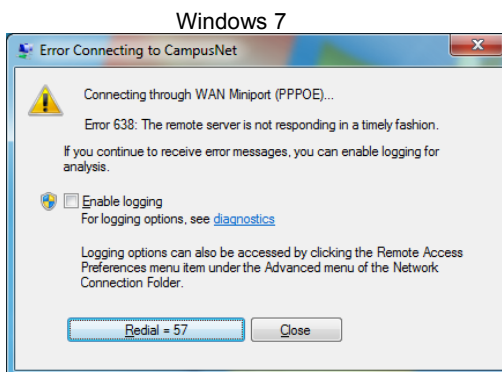
Error 691

Your computer and network connection is ok. Rewrite your user name and password. If there is still no connection please check your user name and password from PSOAS accommodation office (tel. (08) 3173 110).



Error 651

There is probably no traffic between the computer and the network or no connection to the network. Check the Local Area Connection (page 5 and 6 (picture B and D)).



Error 368

The local area connection is disabled. Check page 6, picture D.

CampusNet support

Please, contact PSOAS in any questions and problems concerning CampusNet-network and the Internet traffic. Faults in CampusNet are repaired during working days between 8 am and 4 pm. We aim to repair problems in user interface the next working day after the fault report at the latest. You can make a fault announcement to PSOAS accommodation office, PSOAS CampusNet technical support or on PSOAS web-site (Avux).

When calling CampusNet support please tell us the following things to help us find out where the problem is

- Name and user name
- Your address
- Service class
- The operating system of your computer
- Date and time, when the fault appeared
- How the fault appeared
- When calling CampusNet technical support please keep your computer nearby if possible

Technical support:

Toivo Timonen.(Finnish)
Tel. 044 757 3115
E-mail: toivo.timonen@psoas.fi.

Antti Jaatinen (English)
Tel. 0400 585 377
E-mail: antti.jaatinen@way4u.fi

Concerning CampusNet agreements, usernames and password please contact:

PSOASin accommodation office
Mannenkatu 1 A 90100 Oulu
Tel. +358 8 317 3110
E-mail: asuntotoimisto@psoas.fi

Useful information

The address for outgoing mail is **smtp.dnainternet.net**. Supported protocols are: POP3, POP3s SSL, IMAP4, IMAP4s SSL, HTTP, HTTPS SSL
News group **news.fv.fi**. port 119. Other ISP servers do not work.
The IRC-server of DNA is **irc.dnainternet.fi**. port 666, 667 and 668. Other ISP servers do not work.
Name servers 62.241.198.245 ja 62.241.195.246

Connection to Oulu University

SSH-connection is possible to following machines: paju, koivu, Dep. of electrical and Information Engineering, tols17, palkki. In addition imaps connections are possible to: paju, koivu, tols17, ees2.

Auxiliary equipments in the network

Note that auxiliary equipments like bridges or routers (for example wireless base stations) must not disturb other traffic in the network. For example the device may not work as a DHCP-server. If you have devices disturbing the network your Internet connection will be disconnected.

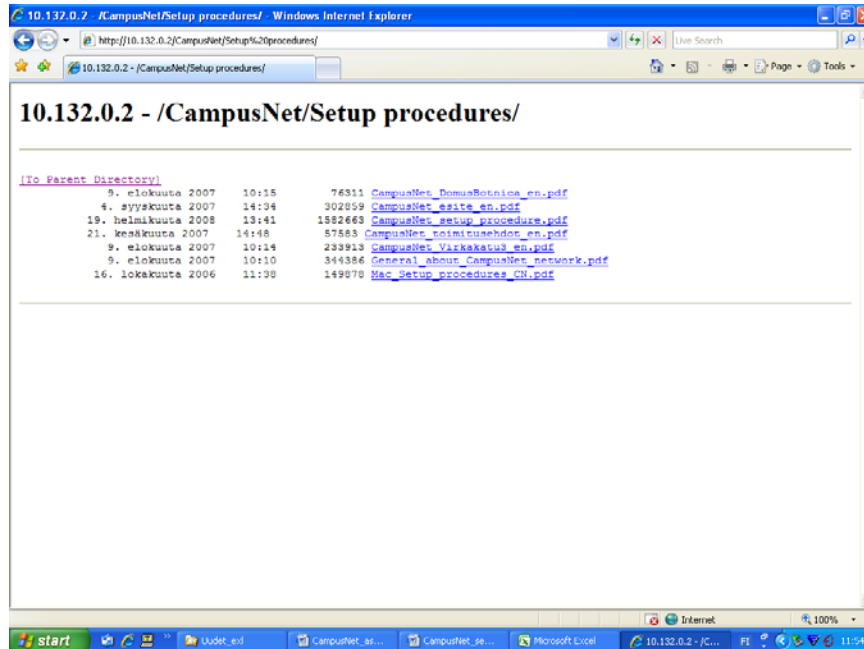
Before operating

Before operating, please read the terms of acceptance.

CampusNet documents

CampusNet documents can be found in CampusNet-network website <http://10.132.0.2/CampusNet/> and on PSOAS website <http://www.psoas.fi>.

The view of the main page of the CampusNet network www-server (15.10.2009)



General_about_Campus_network.pdf

- Structure of CampusNet
- Information about speed
- Data security in CampusNet-network
- Technical support
- Maintenance in CampusNet-network

CampusNet_DomusBotnica_en.pdf

- Domus Botnica HomePNA -network

CampusNet_Virkakatu3_en.pdf

- Virkakatu 3 ADSL -network

CampusNet_Setup_procedure_Win_XP_Vista_7_en.pdf

- This setup procedure

Mac_Setup_procedure_CN.pdf

Macintosh OS X setup procedure

CampusNet_toimitusehdot_en.pdf

Terms of acceptance

An updated version of this guide can be found on the www-server of CampusNet –network Address: [http://10.132.0.2/CampusNet/Setup_procedures/CampusNet setup procedure Win XP Vista 7 en.pdf](http://10.132.0.2/CampusNet/Setup_procedures/CampusNet_setup_procedure_Win_XP_Vista_7_en.pdf) and on PSOAS home page <http://www.psoas.fi>