

Macintosh OS X

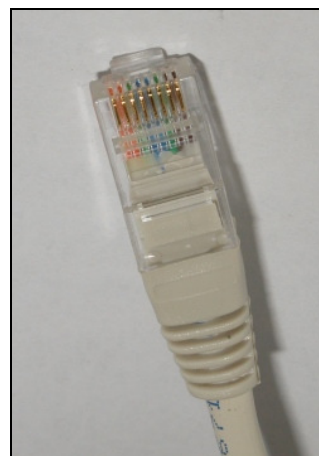
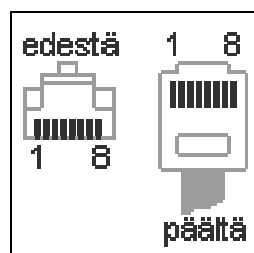
Things to check when starting

The network cable

The network cable is not usually included in the hardware of a new computer or a network card. Therefore you need to buy it separately. The adapter of the network cable (in both ends) should be of type RJ45. There are two kinds of network cables, straight-through and cross over cables. Only the straight-through cable will work in PSOAS Campus network. When buying the network cable you can for example ask for a straight-through network cable for Ethernet-network with RJ45/RJ45 adapters.

“Visual” inspection of the network cable

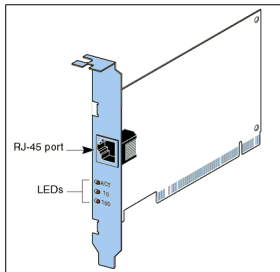
1. Check that the type of the adapter is RJ45 (picture below) and that it has 8 pins (the telephone cable has 6 pins). Usually all pins are connected. At least pins 1, 2, 3 and 6 have to be connected.
2. Put the adapters side by side and check that both adapters of the cable have the same colour order. If the colour order is the same the cable is a straight-through cable and will work in PSOAS Campus network.



RJ45-adapter

The network card

When you buy a new computer the network card is usually included in the hardware. For older computers you need to buy the network card. When buying the network card you should mention that the card would be used in an Ethernet-network with a RJ45 connection. The speed of the network card is 10/100/1000 Mb/s. When installing the network card you should follow the directions of the manufacturer.



An example of a network card



An example of a computer wall socket

Attach your computer to the network wall socket with the network cable and start your computer. Check that the leds of your network card are lit. The link-led is lit the whole time and the Data-led is flashing. In older models there are no leds. In Virkakatu 3 (ADSL) and Domus Botnica (HomePNA) the Internet interface is different from the above. You can get more information from PSOAS.

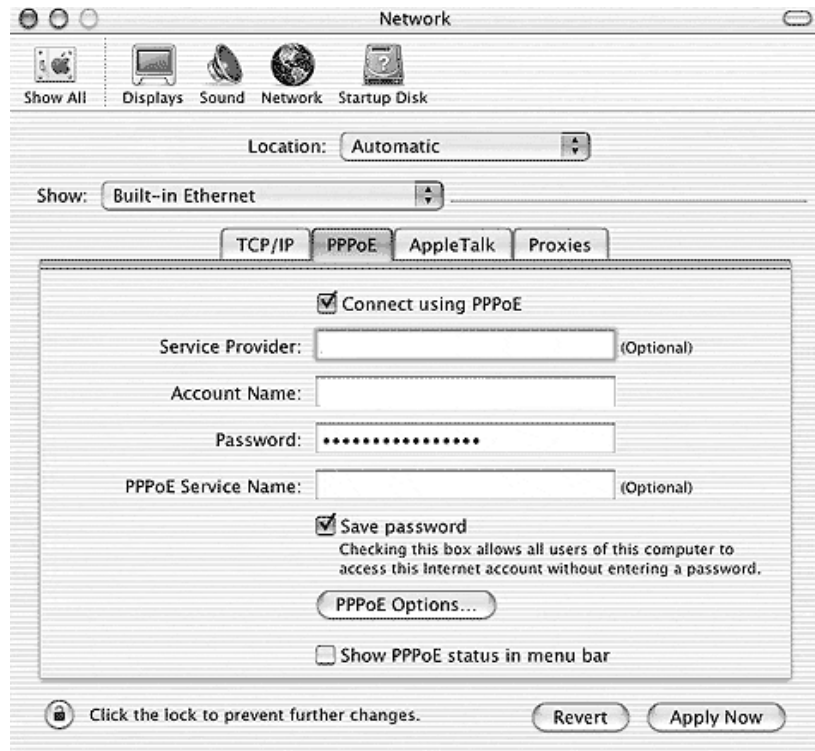
Macintosh OS X CampusNet (PPPoE) Configuration

1. Open the **Apple menu**, choose **System Preferences**



2. Click the **Network** icon.

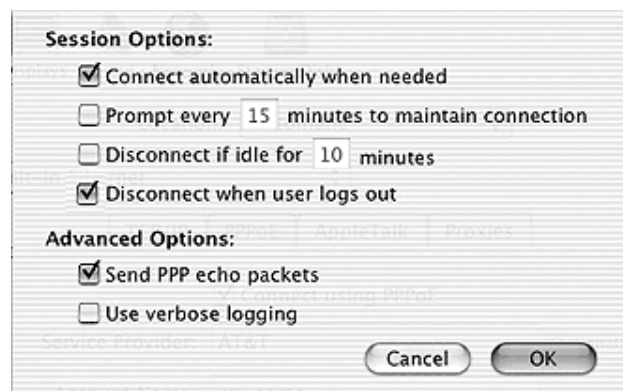




3. Network

1. Location : **Automatic**
2. Show : **Built-in Ethernet**
3. Click the **PPPoE** tab
4. Select the **Connect using PPPoE** option
5. Leave the **Service Provider** field blank.
6. Write the user name and the password you have got from PSOAS
7. Leave the **PPPoE Service Name** field blank.
8. Select the **Save Password** option.
9. Click on the **PPPoE Options...** button for more options

4. Choose settings above and click **OK** and choose **Apply now**

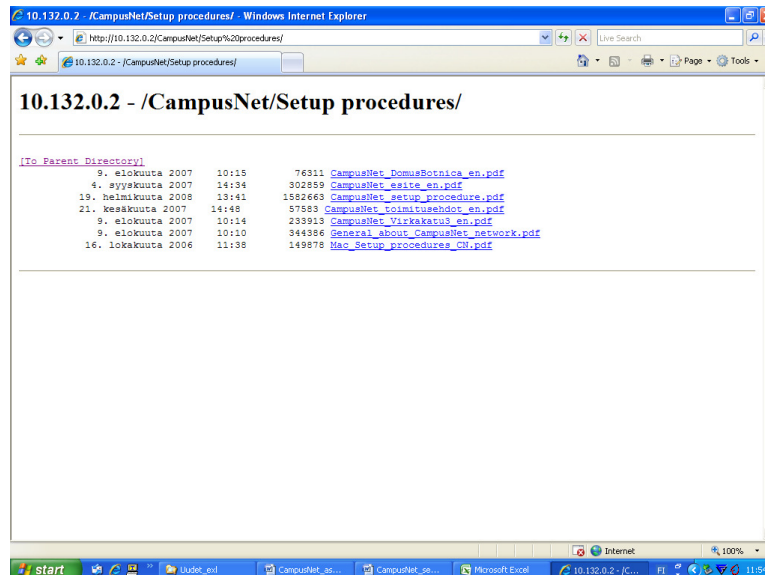


Unfortunately PSOAS does not offer any support for Unix/Linux/Mac operating systems.

CampusNet documents

CampusNet documents can be found in CampusNet-network website <http://10.132.0.2/CampusNet/> and on PSOAS website <http://www.psoas.fi>.

The view of the main page of the CampusNet network www-server (15.1.2009)



General_about_Campus_network.pdf

- Structure of CampusNet
- Information about speed
- Data security in CampusNet-network
- Technical support
- Maintenance in CampusNet-network

CampusNet_DomusBotnica_en.pdf

- Domus Botnica HomePNA -network

CampusNet_Virkakatu3_en.pdf

- Virkakatu 3 ADSL -network

CampusNet_Setup_procedure.pdf

- Setup procedure Windows operating systems

Mac_Setup_procedure_CN.pdf

- This setup procedure

CampusNet_toimitusehdot_en.pdf

- Terms of acceptance

An updated version of this guide can be found on the www-server of CampusNet –network
Address: http://10.132.0.2/CampusNet/Setup_procedures/Mac_Setup_procedure_CN.pdf and on PSOAS
home page <http://www.psoas.fi>