



CAMPUSNET



CampusNet setup procedures Linuxille

About the instructions

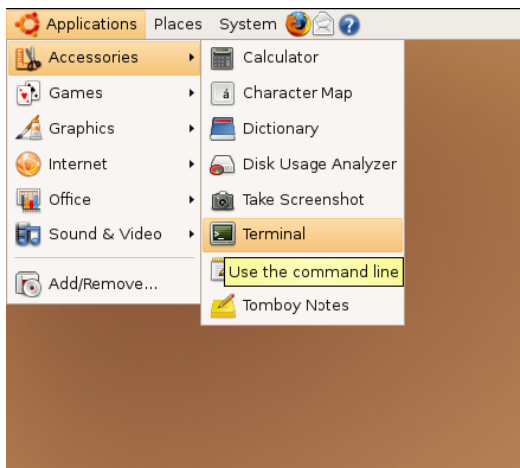
The instructions are primary made for Ubuntu and Debian operating systems. These instructions are also easy to apply to most Debian-based systems.

Preparations

The network card of the computer should be ready for use, the drivers installed and the cable plugged in.

Pppoeconf

Pppoeconf is a tool to help configuring PPPoE-settings. Pppoeconf can be found at least in Debian and Ubuntu systems.

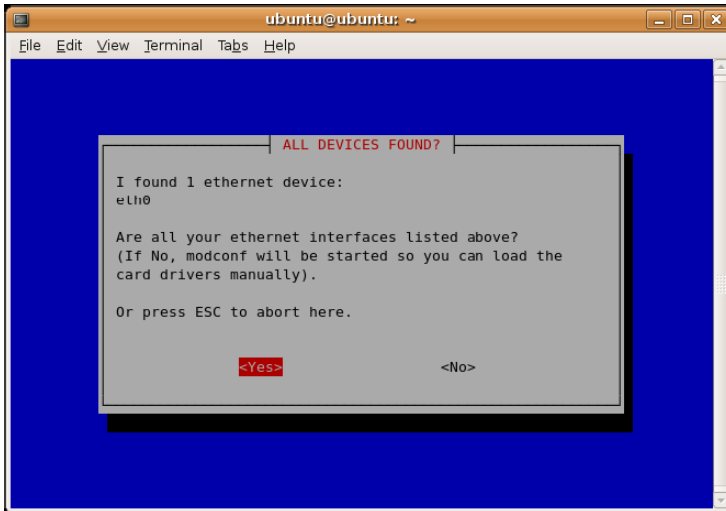


1. Launch the terminal program:

Choose Gnomens Terminal by choosing Gnomens from the main menu
Applications → Accessories → Terminal

2. Launch the Pppoeconfin:

Ubuntu: sudo pppoeconf
Debian: su -pppoeconf



3. Setup:

Choose **Yes** and press **Enter**.

If there is a remark "NOT CONNECTED" please check the network cable.

Normally the setup procedure proceeds to the question "OKAY TO MODIFY". Answer **Yes**.

POPULAR OPTIONS - answer **Yes**.

ENTER USERNAME –fill in the User name you got from PSOAS and press **Enter**.

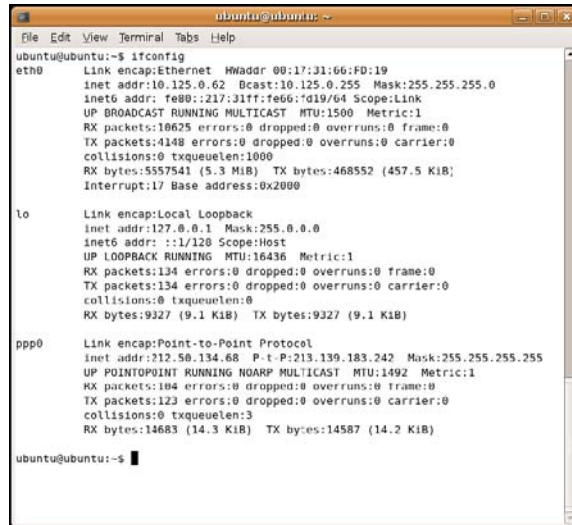
ENTER PASSWORD –fill in the password you got from PSOAS and press **Enter**.

USE PEER DNS –answer **Yes**.

LIMITED MSS PROBLEM - answer **Yes**.
DONE – answer **Yes**.

ESTABLISH A CONNECTION - answer **Yes**.

You are now connected to the network and the next time you start your computer the connection will automatically be formed.



4. Checking the connection:

You can check the connection information with the command **ifconfig**.